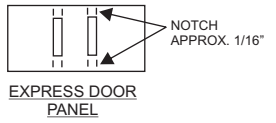
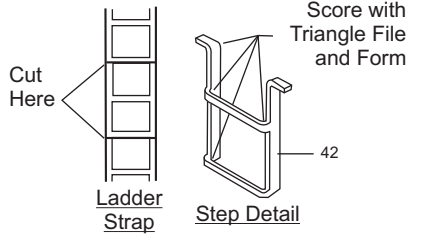
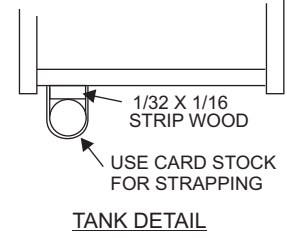
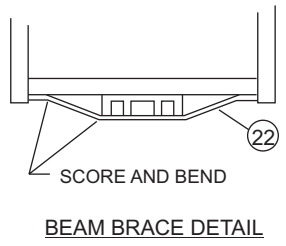
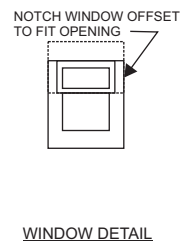
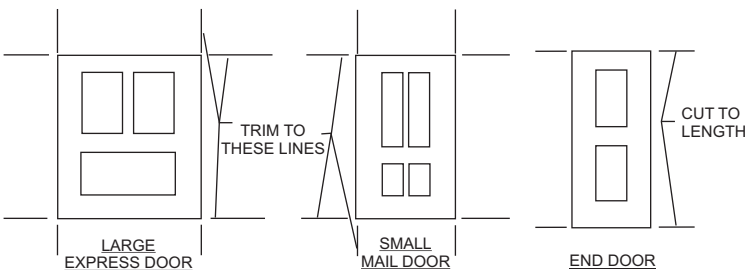
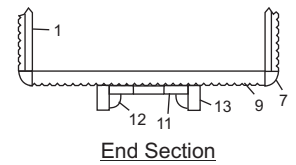
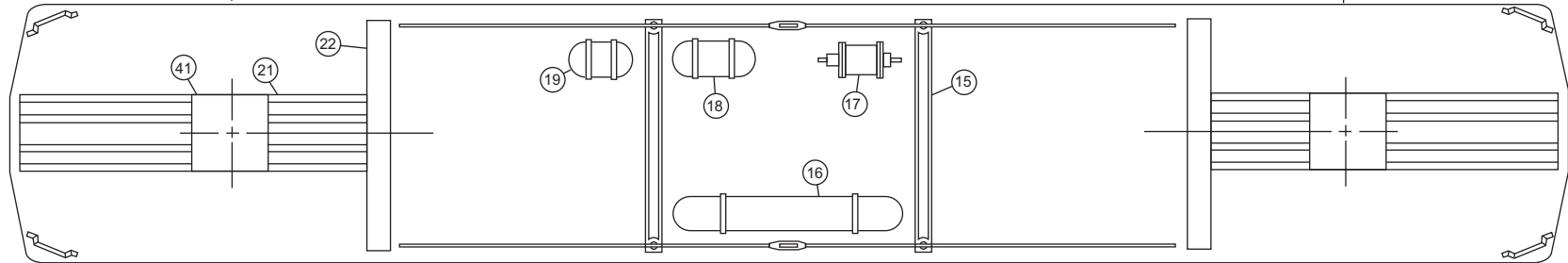
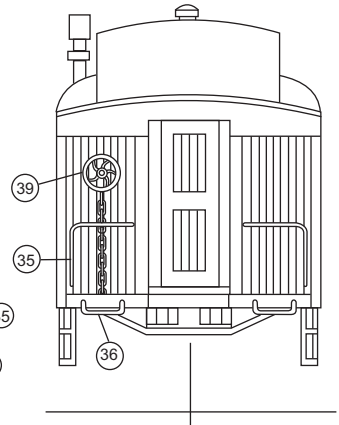
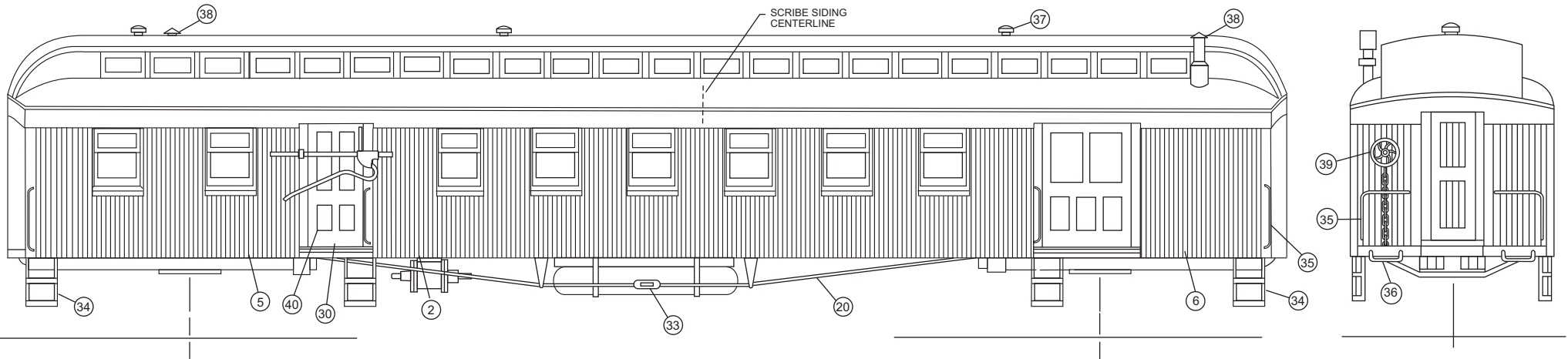
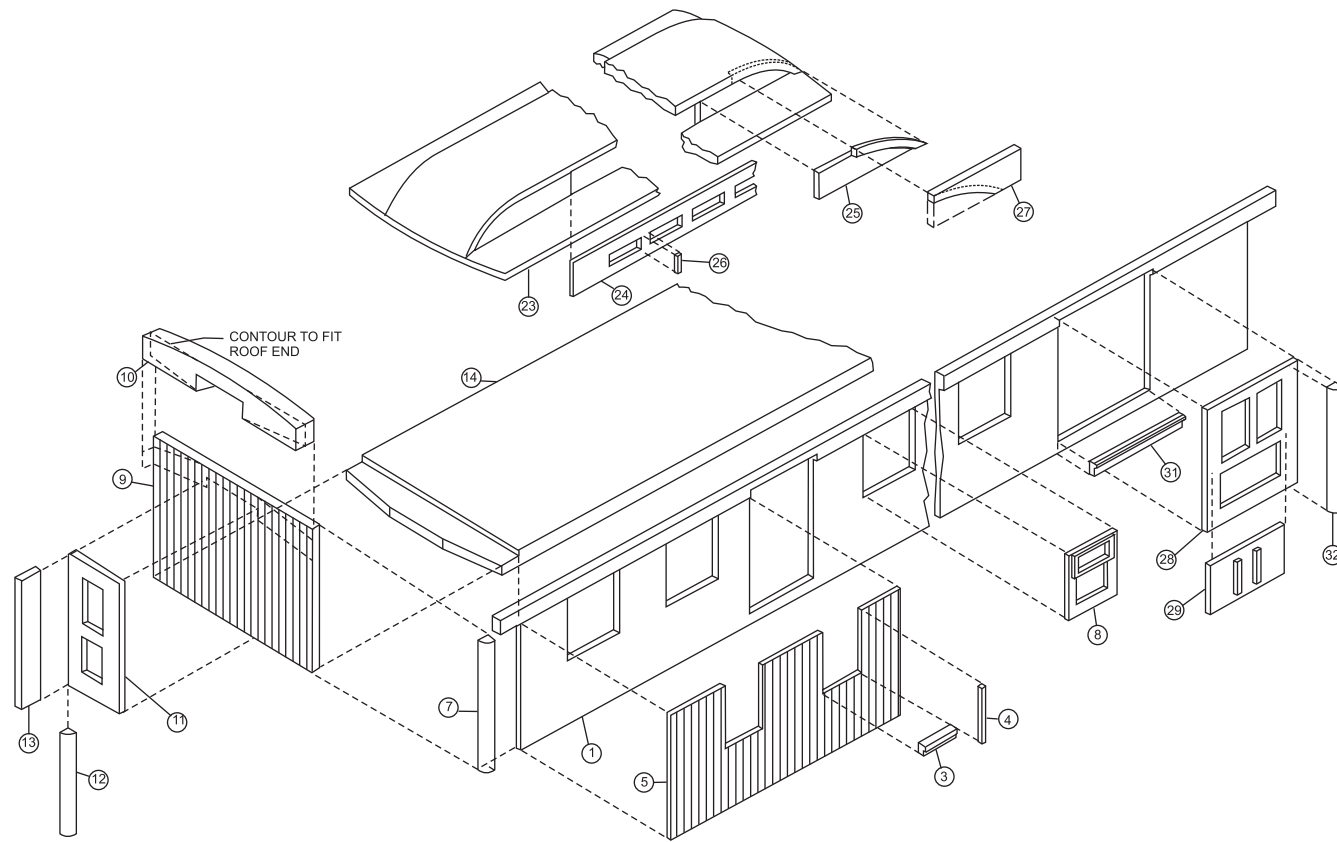


CHICAGO, MILWAUKEE AND SAINT PAUL EARLY 1900 RAILWAY POST OFFICE AND EXPRESS CAR LABELLE KIT NUMBER HO-7





Original Color Scheme
 Orange Sides, Maroon Letterboard,
 Imitation Gold Lettering
 Roof, Underbody Detail and Trucks Black

Built By
C. M & St. P. Railway
 at West Milwaukee Shops
 1901 and 1902

EARLY 1900 RAILWAY POST OFFICE AND EXPRESS CAR

This is a basic kit of an early 1900 RPO & EXPRESS CAR. It is not a "QUICKIE KIT", and therefore if is suggested that the isometric and plan drawings be studied thoroughly, also that the parts be sorted and be noted as to where they are intended to be used. It is suggested that assembly be followed by the numbers in the instructions which correspond with the numbers on the isometric and plan drawings.

SLIDE ASSEMBLY: These are the sub-sides (1). Make up six window scribed siding sections (2) by placing one three window scribed siding piece on left side of side elevation drawing, making sure window openings align, and cut on scribe nearest center line. Repeat for right side piece. Now these pieces may be cemented together to make the six window scribed siding section (2). Repeat for opposite side.
NOTE: When cementing these together, butt top edges against a straight edge to make sure both pieces are in line.

Cut and cement in place belt rail (3) as shown. Next cut and cement in place window casing pieces (4) (STRIPWOOD COLORED END GREEN), as shown. **NOTE:** Make sure belt rail and window casing pieces are flush at backside of scribed siding. Now scribed siding pieces (2) (5) and (6) may be cemented to sub-sides as shown. Center over window openings in sub-sides as close as possible. Trim scribed siding flush with mail and express door openings and* ends of sub-sides. Cut and cement in place 1/16 inch by 1/16 inch quarter round corner posts (7) as shown. Sand scribed siding flush with bottom of sub-sides.

Cut window inserts (8) to size as per WINDOW DETAIL template. Frsf trim off top offset of window strip as shown before cutting windows to width. **CAUTION:** Extreme care should be taken when cutting these inserts to size. After inserts are cut to width, place in sub-side openings, center for margin, and mark upper sash with razor blade to make notch out cut. (SEE WINDOW DETAIL). After windows have been notched, cement in place.

END ASSEMBLY: Refer to isometric drawing and END SECTION DETAIL. With small square determine square edge of end wall (9), this is bottom. Cement in place end letterboard (10), to end wall (9) making sure t is square and flush at top and side edges. Sand end wall (9) flush with top of end letterboard (10). Cut end doors (11) to length as per END DOOR template and cement in place, making sure door is tight against notch in letterboard. Sand door flush with bottom of end wall. Cut to length 1/16 inch by 1/16 inch quarter round (12) and 1/16 inch by 1/8 inch stripwood (13) and cement in place as per END SECTION DETAIL and isometric drawing.

FLOOR: Lay out bottom of floor (14) for position of queen posts (15), gas tank (16), brake cylinder (17), air tank (18) aid auxiliary air tank (19). Cement beams (21) and 1/64 inch by 1/8 inch stripwood beam brace (22) in place. (SEE BEAM BRACE DETAIL). Leave other underbody parts off until car body is assembled.

ROOF: Start to assemble roof (23) by cementing clerestory window strips (24) inside roof on each side. Cut to length 1/32 inch by 3/32 inch stripwood (25) and 1/32 inch by 1/32 inch stripwood posts (26), cement in place. Now roof ends may be rounded to contour shown on plan drawing. Make template from card stock and use to check contour for correct shape. Care should be taken when sanding roof ends to size so as not to sand off too much. Make up overhang pieces (27) for ends of roof from 1/16 inch by 1/2 inch stripwood, as shown and cement in place.

CAR BODY ASSEMBLY: Cement completed ends to top of floor as shown, making sure they are square. Cement completed sides to floor and ends, making sure that fop of end* letterboards and side letterboards are in line. To make sure letterboards match, place roof on top of sides and ends and hold in crrrect position until cement has set. **IMPORTANT: DO NOT** apply cement at mail and express door coenings.

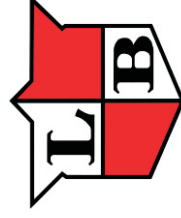
Cut express doors (28) to size as per EXPRESS DOOR template . Cut and cement in place panel (29) as per PANEL DETAIL. Cut mail doors (30) to size as per MAIL DOOR template. Next cut out strip at bottom of express and mail door openings. Set completed doors on floor and cement at TOP ONLY. Cut to length sill strip (31) and cement in place, also cut and fit 1/16 inch by 1/16 inch quarter round posts (32) and cement in place.

Make up and apply gas tank (16) and air tanks (18) and (19) as shown. (SEE TANK DETAIL). Cement on queen post

(15), install truss rods (20), turnbuckles (33), brake cylinder (17) and strap steps (34). (SEE STRAP STEP DETAIL). Make up hand rails (35) and install. Add grab irons (36), roof vents (37) (brass escutcheon pins), chimneys (38), brake wheels and chains (39) mail bag catcher arms (40).

Car is ready for painting. After painting, add clear acetate for clerestory windows in roof, side windows and doors. Attach diaphragms (Not Supplied).

NOTE: Position of truck centers will be determined by type and make of trucks used, also radii of curves car is to operate over. Position bolsters (41) accordingly.



LaBelle Woodworking Company
5101 Ridge Road
Cheyenne, Wyoming 82009
Phone :307-433-9909 Fax: 307-433-9949
Toll Free: 866-246-9967 (Voice Only)
e-mail: info@labellemodels.com